



## HP CA Migration Services

Delivering tools and services for HP CA migrations ....

### Client Automation 7.5

With the recent release of HP Client Automation version 7.5 now is a great time to take advantage of the new features available and upgrade your existing CA Infrastructure. For many people change can be a large step – the overheads of updating all the components within CA often deemed as complex and time consuming.

With NATOLI's industry wide experience and CA Migration tools we can ensure the Migration process has the least impact on your operational activities as possible. Our consultants all come with many years experience in design, implementation and migration of CA across a wide range of corporate environments. This experience, combined with our in house developed tools (optiMIGRATE) means that NATOLI are in the unique position of being able to offer a complete end to end service.

### Complimentary Workshop

**We are so sure of our tools, capabilities and experience, we offer a complimentary 1 day workshop to all our customers interested in updating to CA 7.5.** In this session we will examine all aspects of your environment, and based upon this offer you a **Fixed Price guaranteed cost** for upgrading your environment to the latest version 7.5 release.

### What to Consider?

There are many aspects involved with updating your CA infrastructure. Your NATOLI workshop will help you in identifying the key areas for you.

Typically a migration workshop covers:

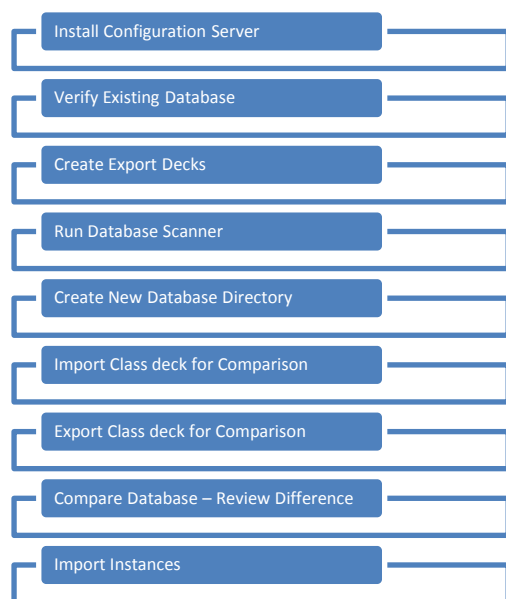
- Version of CA (Radia) you are migrating from.
- Products in use (OS Mgr, Patch, Usage)
- Size of infrastructure
- Database customisation
- Application base
- Business Requirements
- Specific deliverables

These factors will enable NATOLI to develop a fixed upgrade path, specific to your environment requirements, that details:

- Costs
- Timescales
- Key stage plan (preparation, test and migration guide)
- Regression steps
- UTF-8 Compliancy
- Application update analysis
- Test
- CSDB Migration tasks
- Identified business deliverables

## What's Involved?

The CA Migration procedure will vary from one client to the next depending on the size of the implementation and products installed. One aspect that will remain a constant for all environments, and is typically the starting point of any migration, will be updating the Configuration Server Database. This is a 10 step process with considerable manual intervention and review stages:



This phase offers the highest level of complexity and as such requires a expert level of experience and product knowledge.

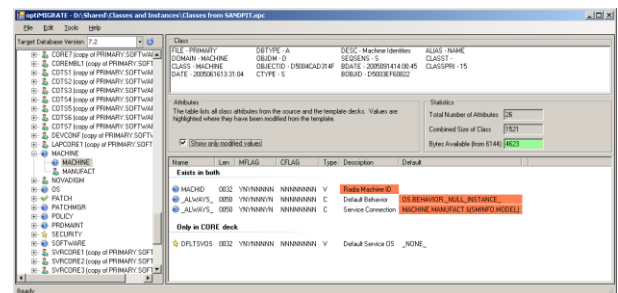
## optiMIGRATE

One of the key stages within the CSDB migration, both from a technical perspective and from the timescales involved, will be comparing the new database with the existing databases in your environment. Typically many changes are made to the CSDB – in classes and instances. The HP Migration strategy provides a tool that compares your database with that of the new version – however there is still a time consuming and extremely complex process to identify the changes and then deciding how to progress.

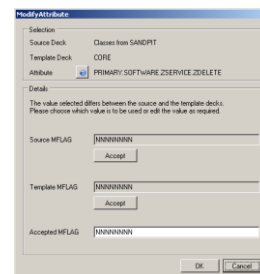
As this is a critical aspect of the migration it can result in serious delays if mistakes are made. **This is where optiMIGRATE helps NATOLI deliver real benefit to our migration customers.**

## The Console

optiMIGRATE provides a GUI interface to allow the comparison of ANY database schema. A simple interface is provided highlighting where the database differences are and recommends options on how to proceed. Differences, new classes or ambiguities are graphically flagged and can be simply reviewed and amended. Potential problems such as class sizes will be flagged allowing any issues to be resolved before the changes are made.



For each level of the database (entire DB, domains, classes and instances) optiMIGRATE's granular approach allows the administrator to review the changes before finally building the migration pack that will be used to update your database.



optiMIGRATE is used in some of the most complex environments in the world, helping to deliver consistent upgrades in critical environments. NATOLI utilise the tool to dramatically reduce the overheads involved with a Client Automation migration. optiMIGRATE can also resolve issues with existing internal Databases – do you have problems with test and live environments? Simply use optiMIGRATE to gain a detailed breakdown of the differences and obtain the ability to easily synchronise the changes.

To discuss a migration workshop, and the benefits that NATOLI tools can bring to your migration please contact Martin Sweeney on 07843 027 515 or email [martin.sweeney@natoli.co.uk](mailto:martin.sweeney@natoli.co.uk)